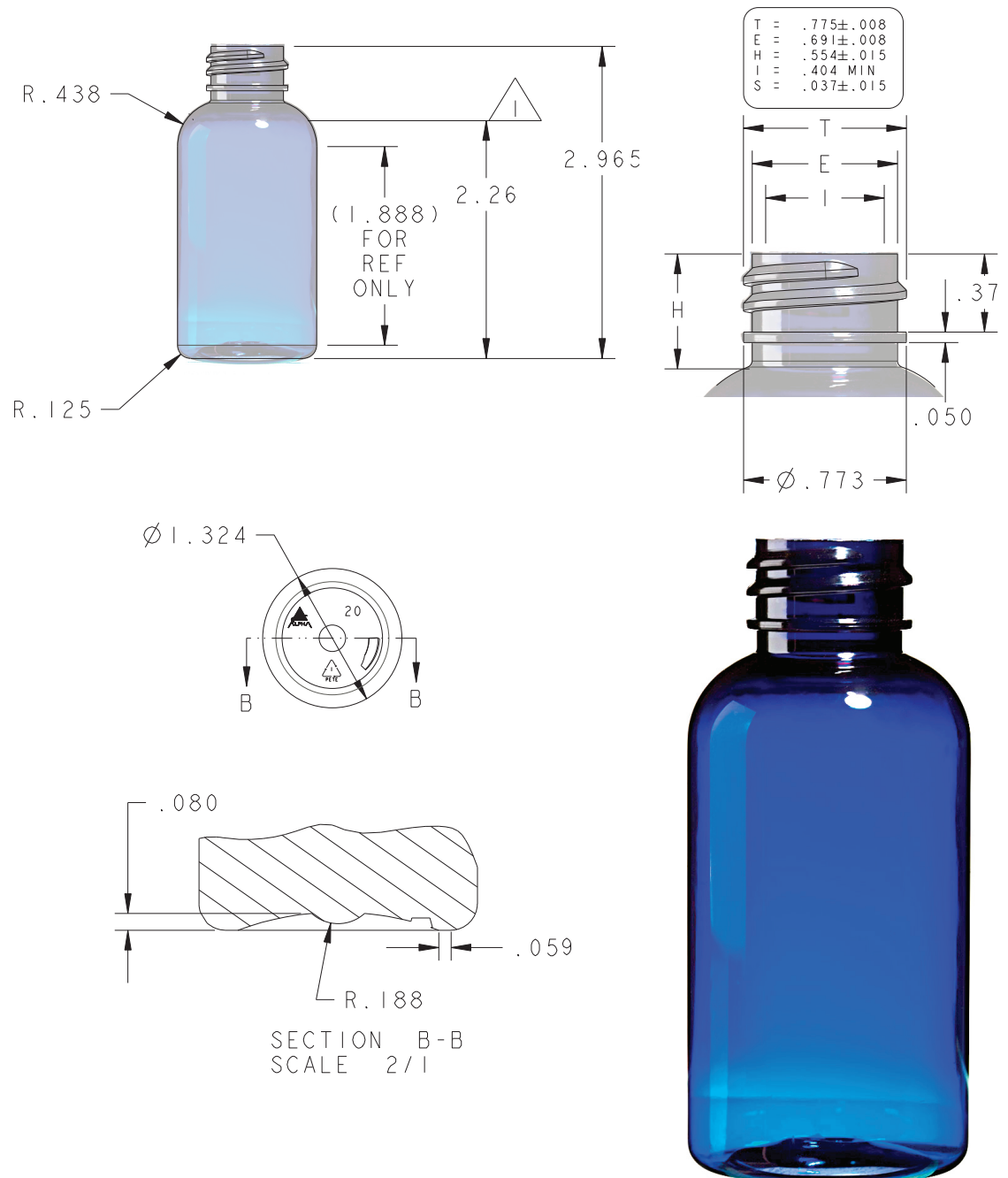


PACK CODE BTL2141-45ml  
PACK TYPE Bottles  
CATEGORY Skincare



## PRODUCT DATA SHEET

<b>DESCRIPTION</b>	Round PET bottle available in 30, 40, 60, 125, 250, 360, 500, & 1000 ml.. The 45 ml capacity has 20-SP neck size.
<b>BENEFITS</b>	PET is fully recyclable Economical for a wide range of products Round shape is easy to decorate Compatible with most products Standard neck size
<b>APPLICATIONS</b>	Creams, lotions, body wash, shampoo, conditioner

### TECHNICAL SPECIFICATIONS

#### GENERAL INFORMATION

DIMENSIONS	
Total Height	75.3mm
Diameter	ø33.62mm

#### PRODUCTION & PACKING

PRODUCTION	
Lead time	4-6 weeks
MOQ	10k
Plant location	USA

#### MATERIALS

Bottle	PET
--------	-----

#### PACKING SPECS

Carton Size	G.W	Case W	Qty/Ctn
24x15x12	8.2	20.98	640

#### CAPACITY

Declared	45ml
OFC	49±3ml

#### DECO OPTIONS

**Bottle**  
Injection color  
Silk screen, hot stamp, label